



SITEPRO[®]

EDGE MONITORING

Product Catalog

monitoring at the edge



The SitePro Edge family delivers scalable, field-ready monitoring solutions engineered for remote industrial applications. Designed to match existing SitePro wiring and installation standards, all Edge offerings support telemetry-only functionality and integrate seamlessly into the SitePro cloud platform.

COMMON FEATURES

Technician-Friendly Deployment

Matches existing SitePro panel wiring and labeling standards.

Monitoring-Only Operation

All systems collect and transmit data with no control.

Remote Connectivity

Cloud-connected (Integrated Cellular Modem) with local data buffering during outages.

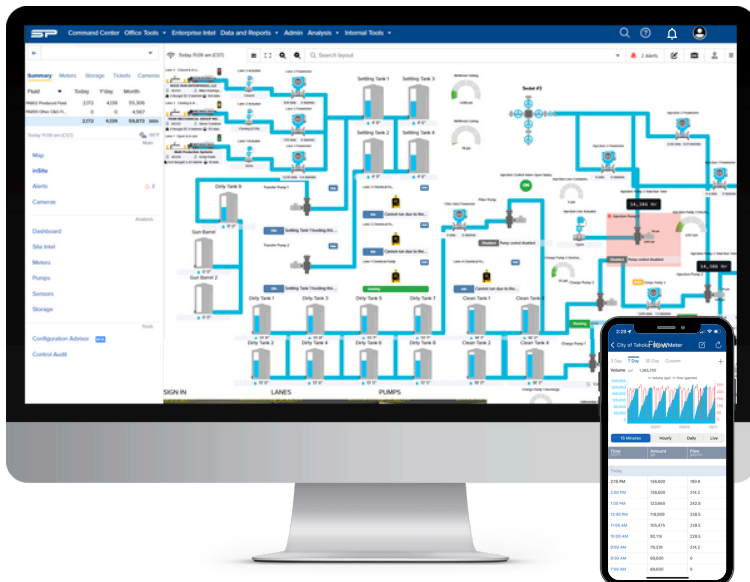
Industrial Power Input

Operates from 12–24VDC.

Base Device

On Logic FR201 (Raspberry Pi CM4)

You can't **manage**
what you can't **measure**
You can't **measure**
what you can't **see**



Equipment Supported

- Pumps
- Tanks
- Level Monitors
- Pressure Transmitters
- Flow Meters
- BMS (Burner Management System)
- Third-Party PLCs (LACT, WACT, Weather Station, etc.)
- Radio Panels
- Generator
- Switches
- Lights/Beacons
- Power Supplies
- Push-Button ESD

And More...

Edge Monitoring Base

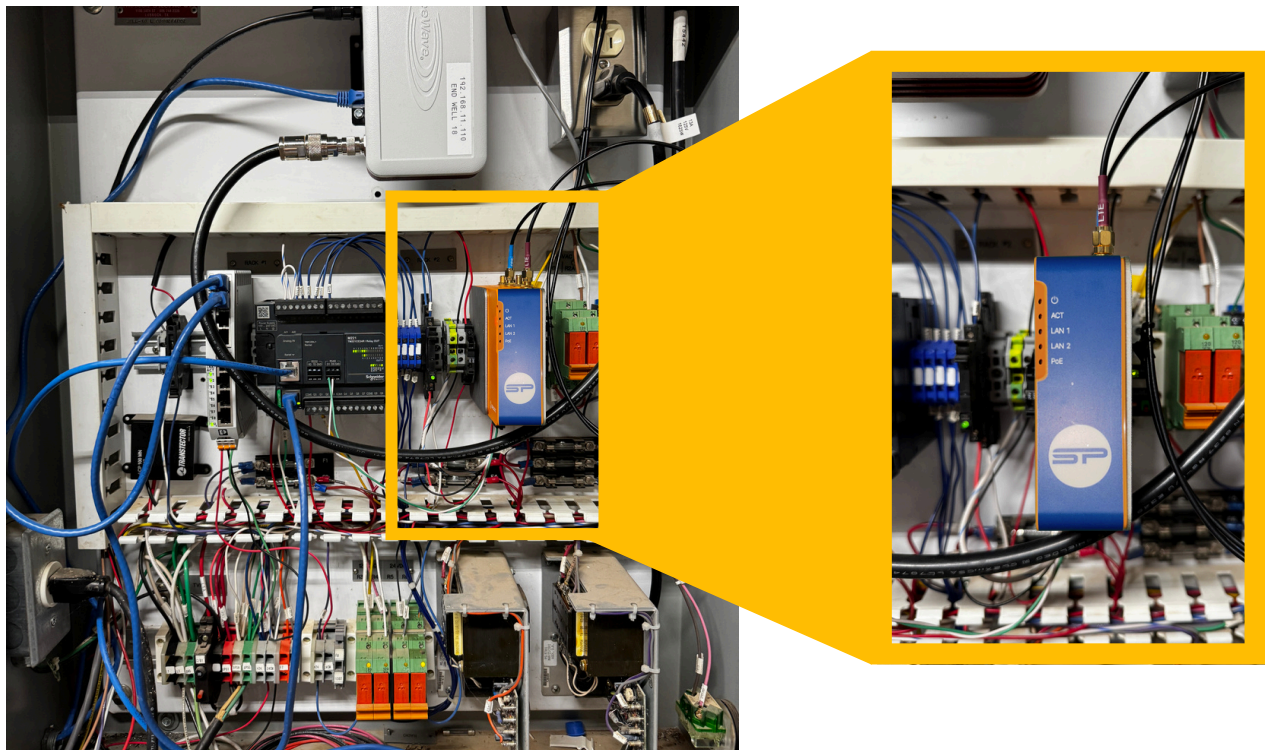
Price: \$999

Form Factor: Device Only (no enclosure)

Connectivity:

- Dual Ethernet
- RS-232/422/485 serial port

Use Case: Retrofit into existing enclosures for basic telemetry via Modbus Connection (e.g., flow meters, tank level sensors, VFDs, PLCs)



SitePro Edge installed in existing control panel at the City of Wolfforth.

Edge Monitoring Modbus

Price: \$2,000

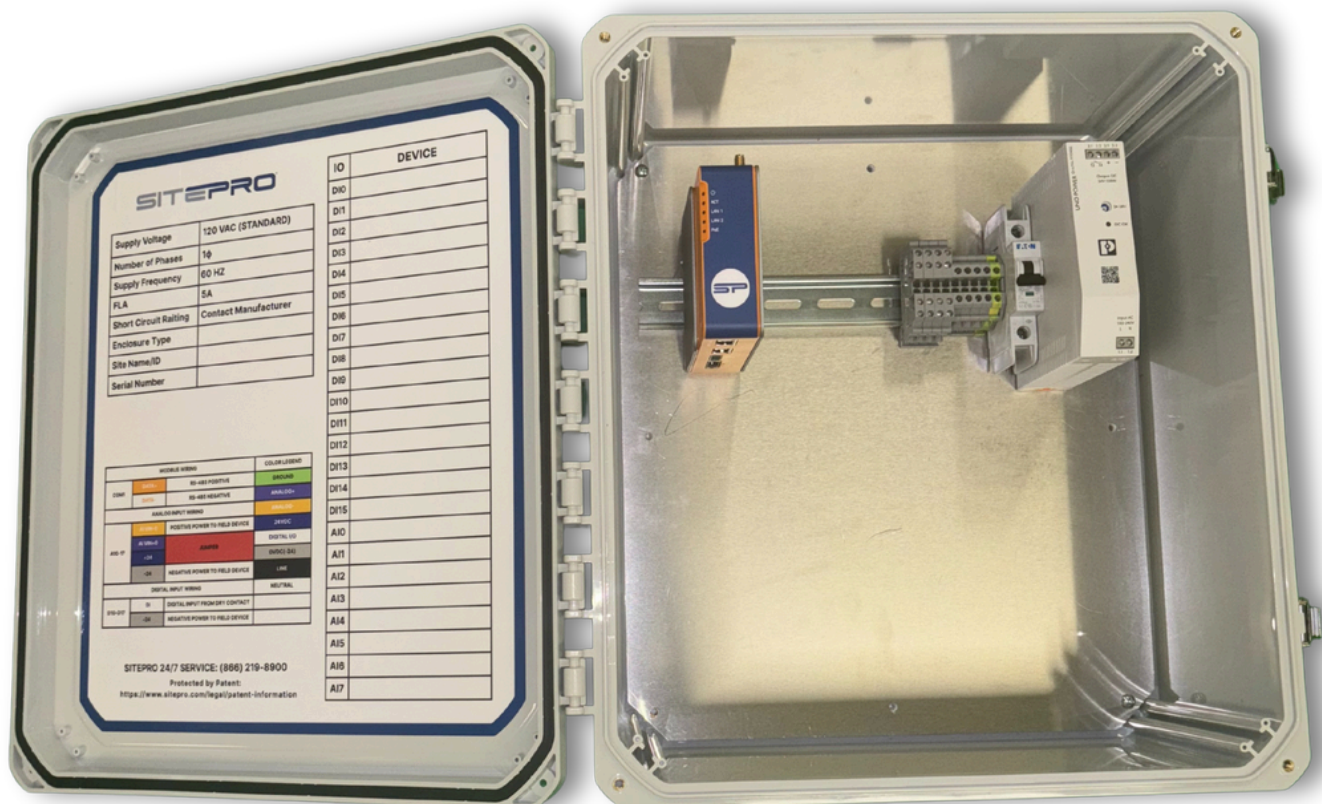
Function: Protocol gateway for Modbus RTU & TCP

Form Factor: NEMA-rated SitePro enclosure.

Connectivity:

- RS-485 terminal block (multi-device bus)
- Ethernet

Use Case: This has the same function as the Base, with an enclosure and power supply.



Edge Monitoring I/O

Price: \$3,099

I/O: Advantech ADAM-4117 (8 AI) + ADAM-4055 (8 DI)

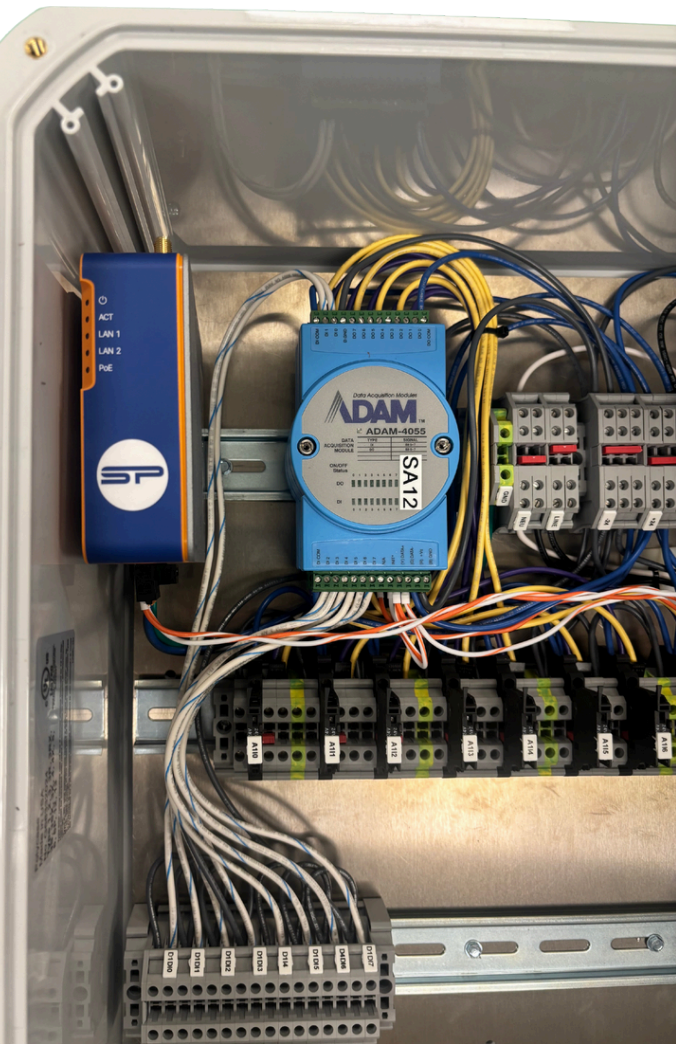
Form Factor: NEMA-rated SitePro enclosure.

Features:

- Analog input: 4–20mA
- Digital input: dry contact

Use Case: This Offers the same functionality as the Modbus Only option, but adds the ability to read 4-20mA signals, and Digital Inputs

- Could be a good fit for Riser locations that would poll a Flow Meter (Modbus), Pressure Transducer (4-20mA), Murphy Switches (Digital Input)



Edge Monitoring PLC

Price: \$3,499

I/O: Schneider M221 PLC

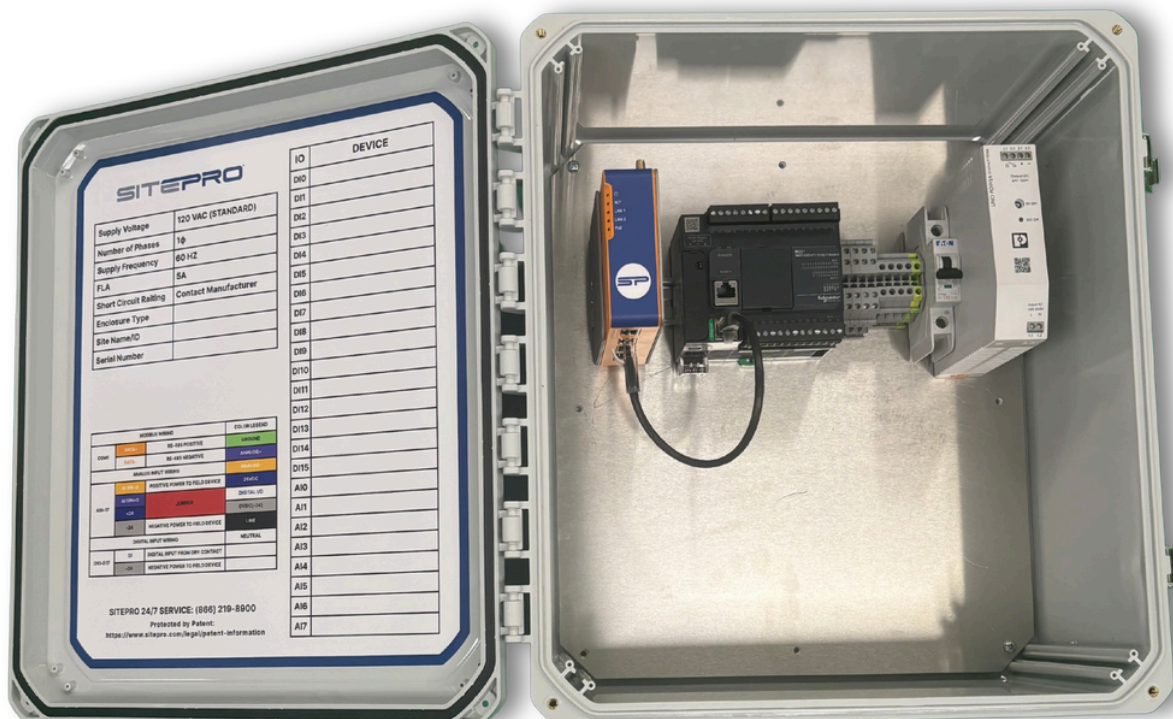
Form Factor: NEMA-rated SitePro enclosure.

Features:

- Analog input: 4–20mA
- Digital input: dry contact
- Set up to accommodate inputs for metering devices that are not smart (e.g., Pulse Flow Meters, Analog Flow Meters, Pump Run Times, Etc.)

Use Case: This Offers the same functionality as the Modbus Only option, but adds the ability to read 4-20mA signals, and Digital Inputs

- Could be a good fit for Lift Stations where we would be monitoring Floats (Digital Input), Level Transducers (4-20mA), VFD Data (Modbus), Pump Run Time Data (Digital Input), Power Failure (Digital Input)





806-687-5326
SALES@SITEPRO.COM
WWW.SITEPRO.COM